

3-PART SERMON SERIES

# SULKING FACE, SAVING GRACE







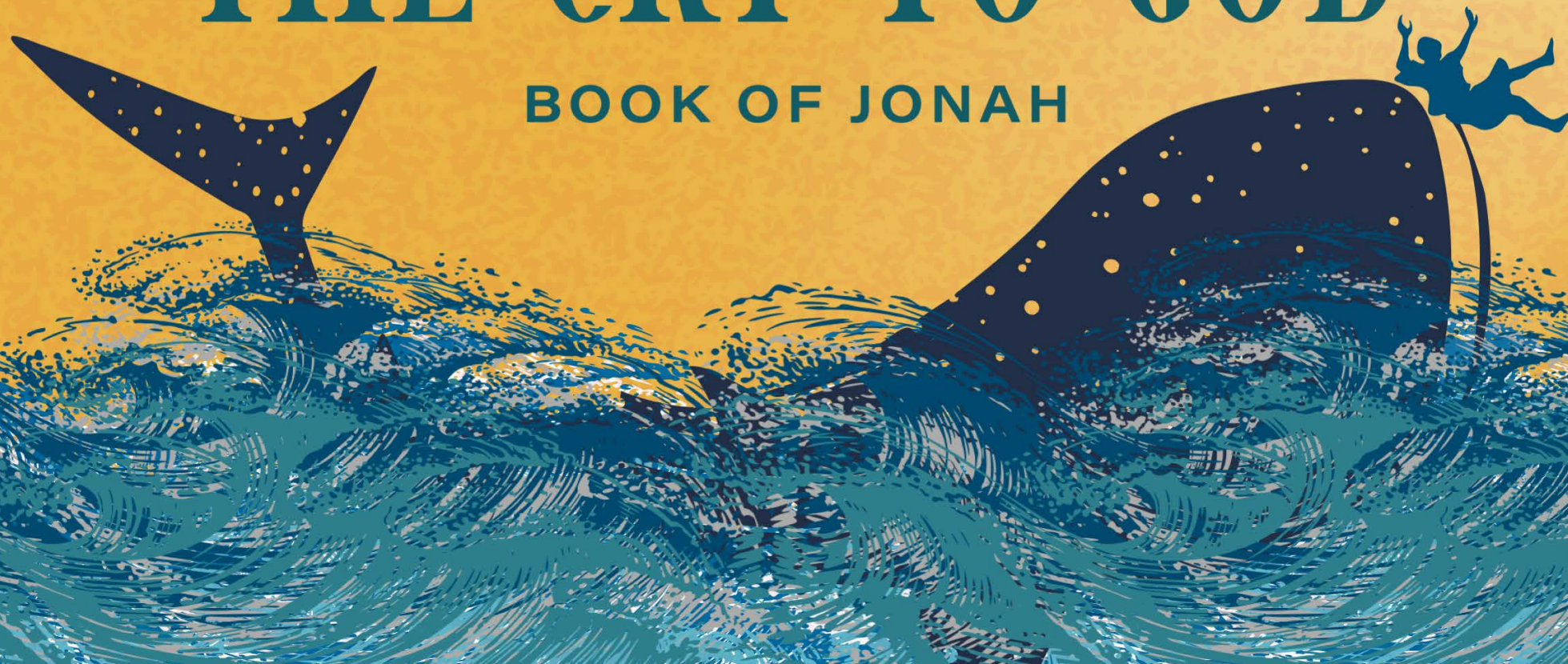




SULKING FACE, SAVING GRACE PART 2

# THE CRY TO GOD

BOOK OF JONAH







God *lovingly*  
responds to and **transforms**  
those who cry out to Him!





# THE SAILORS' CRY

JONAH 1:14-16





## THE SAILORS' CRY

**THE SAILORS TURNED FROM  
Worshipping other gods**

➤ **Revering Yahweh  
Recognizing His power  
& authority**

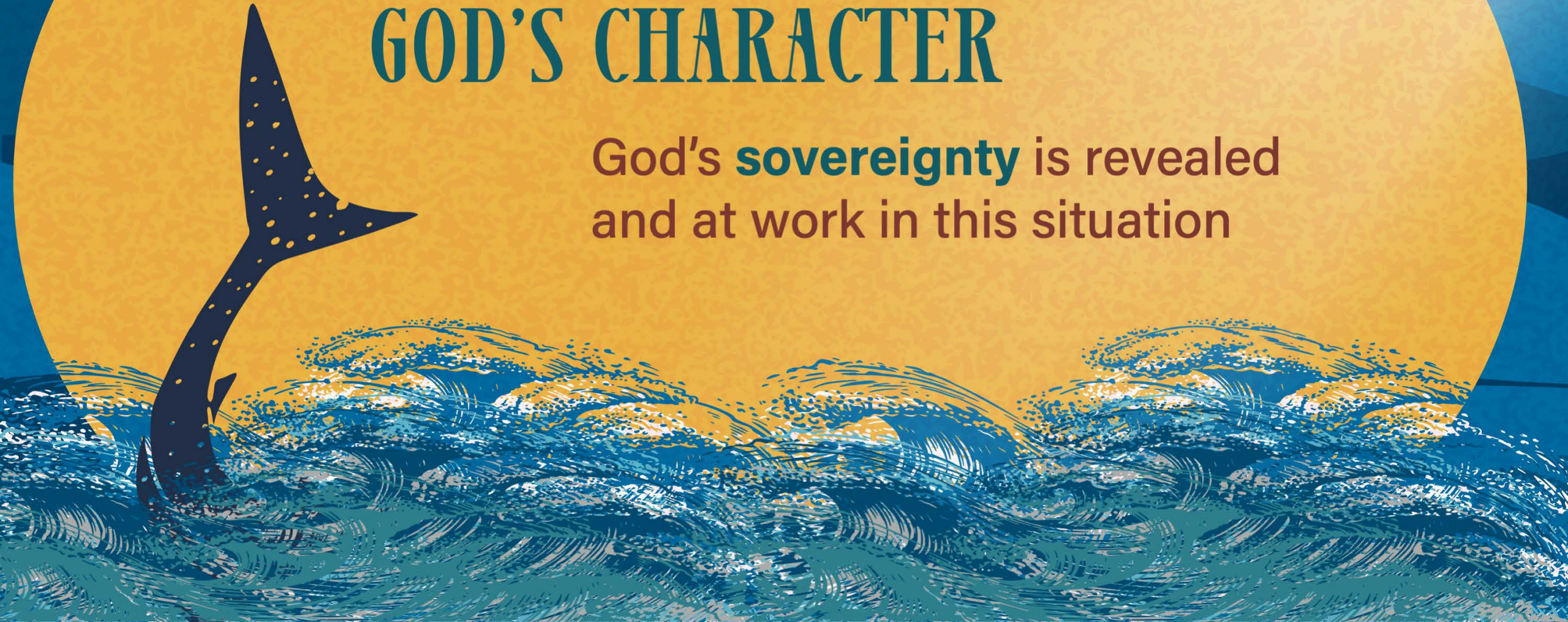




THE SAILORS' CRY

# GOD'S CHARACTER

God's **sovereignty** is revealed  
and at work in this situation





## THE SAILORS' CRY

*God's sovereignty tells us  
He is **in control** of all things!*

*We can trust in His **plans** and **guidance**  
despite the difficulties situations we are in*





## THE SAILORS' CRY



**A beautiful pearl is in fact,  
a healed wound,  
a product of pain**





# JONAH'S CRY

JONAH 2:1-10





## JONAH'S CRY

**JONAH TURNED FROM**  
**Being in darkness**  
**and distress**



**Finding hope**  
**and thanksgiving**

**Being lost**



**Finding purpose**

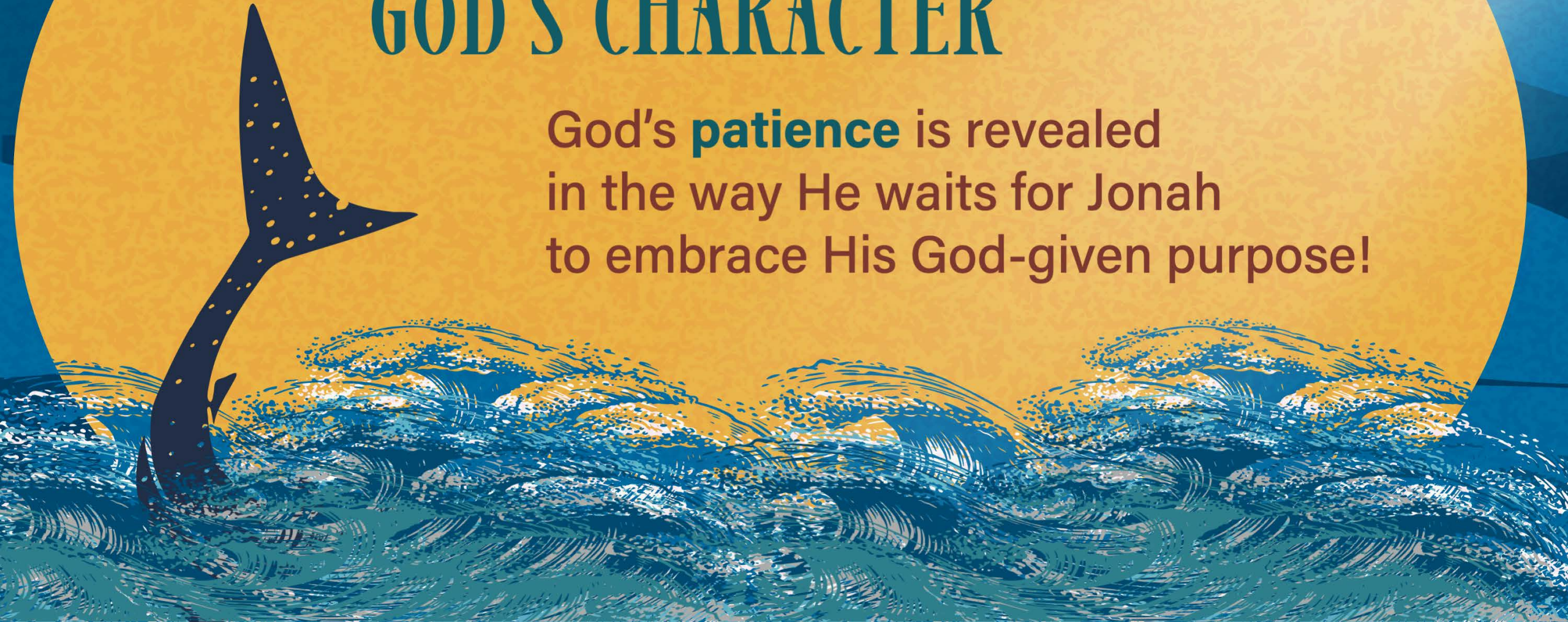




JONAH'S CRY

# GOD'S CHARACTER

God's **patience** is revealed  
in the way He waits for Jonah  
to embrace His God-given purpose!





# NINEVEH'S CRY

JONAH 3:5-10





## NINEVEH'S CRY

### NINEVITES TURNED FROM

**Wickedness  
Evil**



**Repentance**

**Destined for  
Destruction**



**Deliverance  
and salvation**





## NINEVEH'S CRY

*If we confess our sins, he is **faithful and just**  
and will **forgive** us our sins and purify us from  
all unrighteousness.*

1 JOHN 1:9

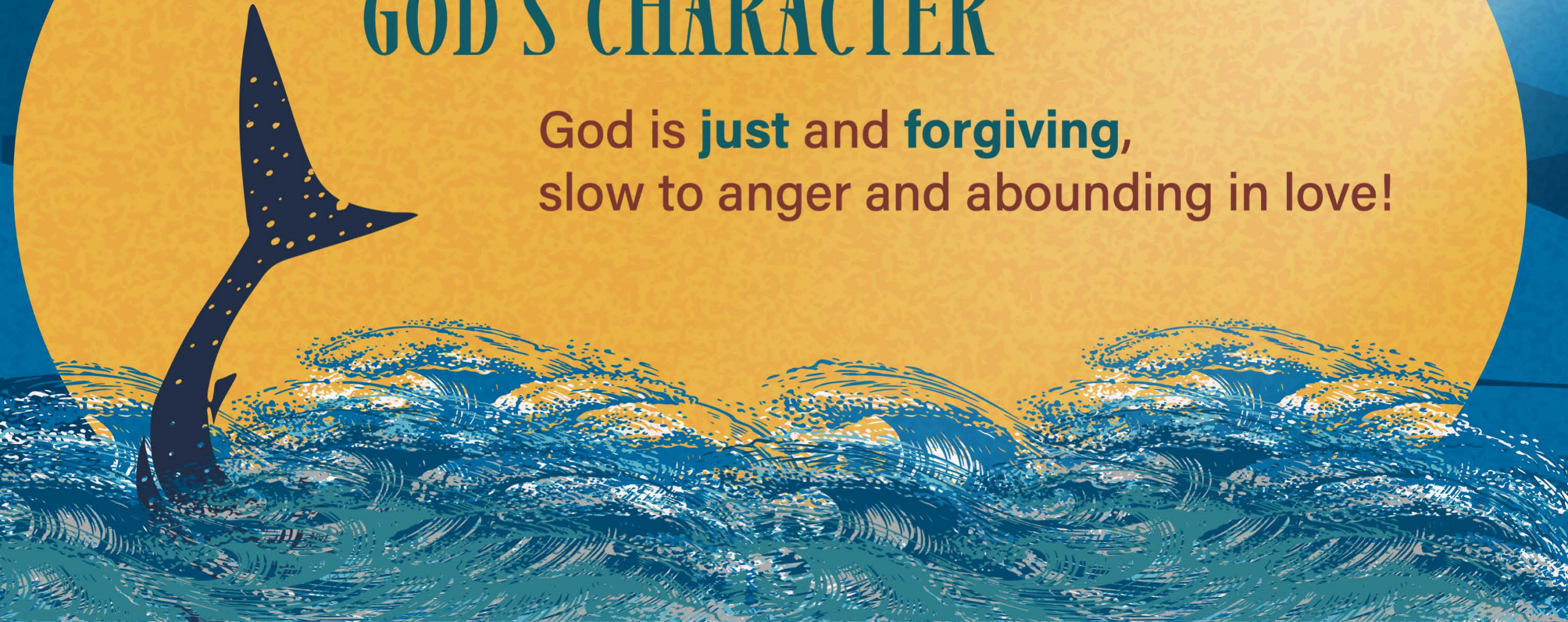




NINEVEH'S CRY

# GOD'S CHARACTER

God is **just** and **forgiving**,  
slow to anger and abounding in love!

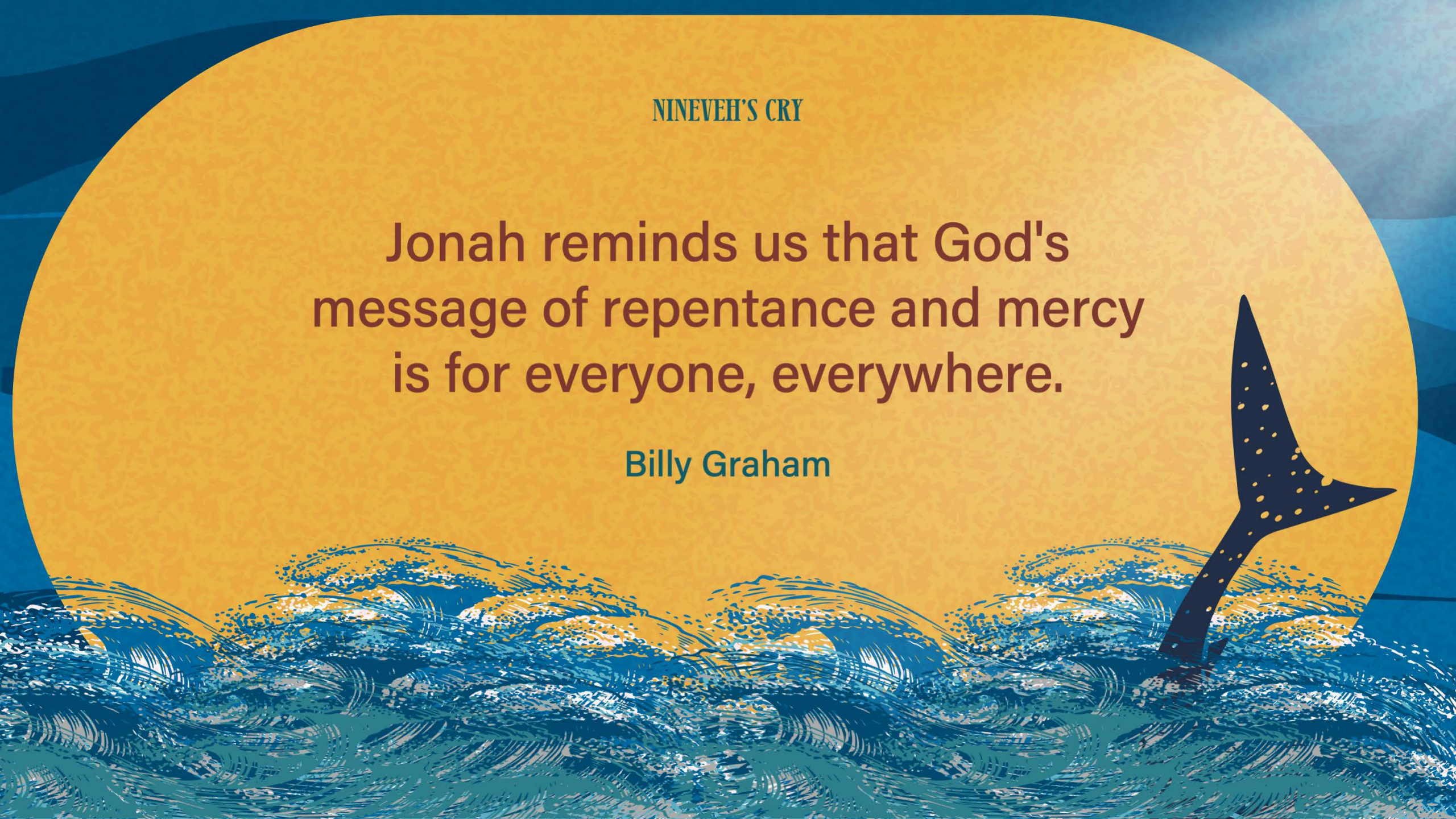




NINEVEH'S CRY

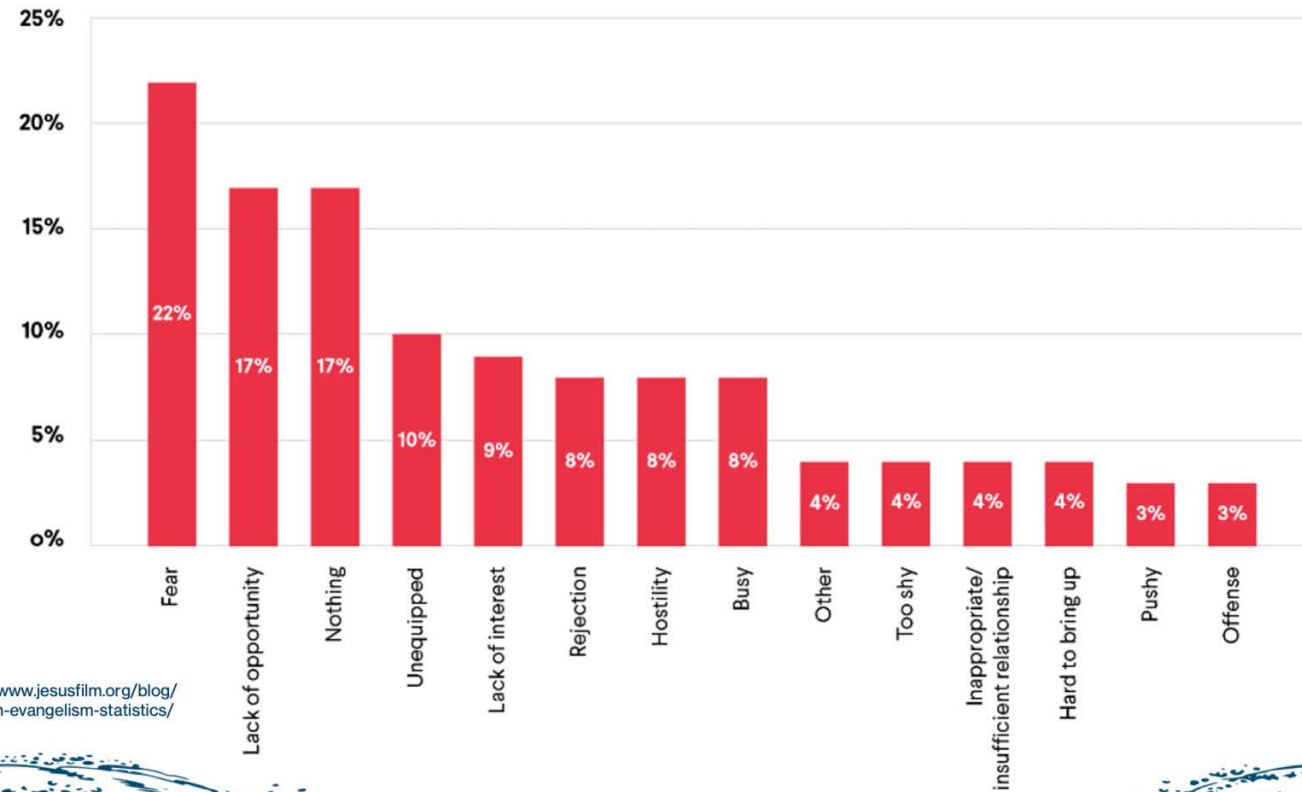
Jonah reminds us that God's  
message of repentance and mercy  
is for everyone, everywhere.

Billy Graham





## What prevents you from sharing your faith?



<https://www.jesusfilm.org/blog/christian-evangelism-statistics/>



NINEVEH'S CRY

*Let everyone call urgently on God*

JONAH 3:8





# JONAH'S COMPLAINT

JONAH 4:1-10

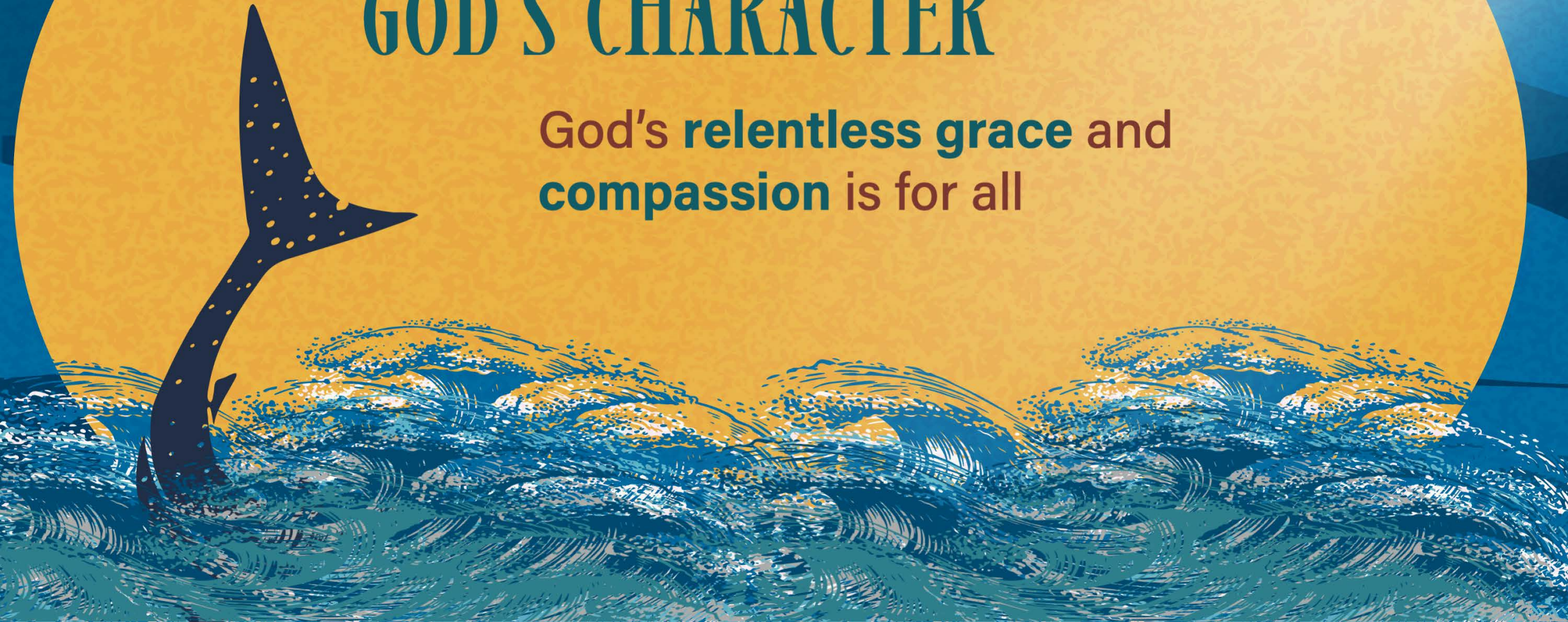




JONAH'S COMPLAINT

# GOD'S CHARACTER

**God's relentless grace and  
compassion is for all**





## JONAH'S COMPLAINT

**JONAH TURNED FROM**

**Anger**

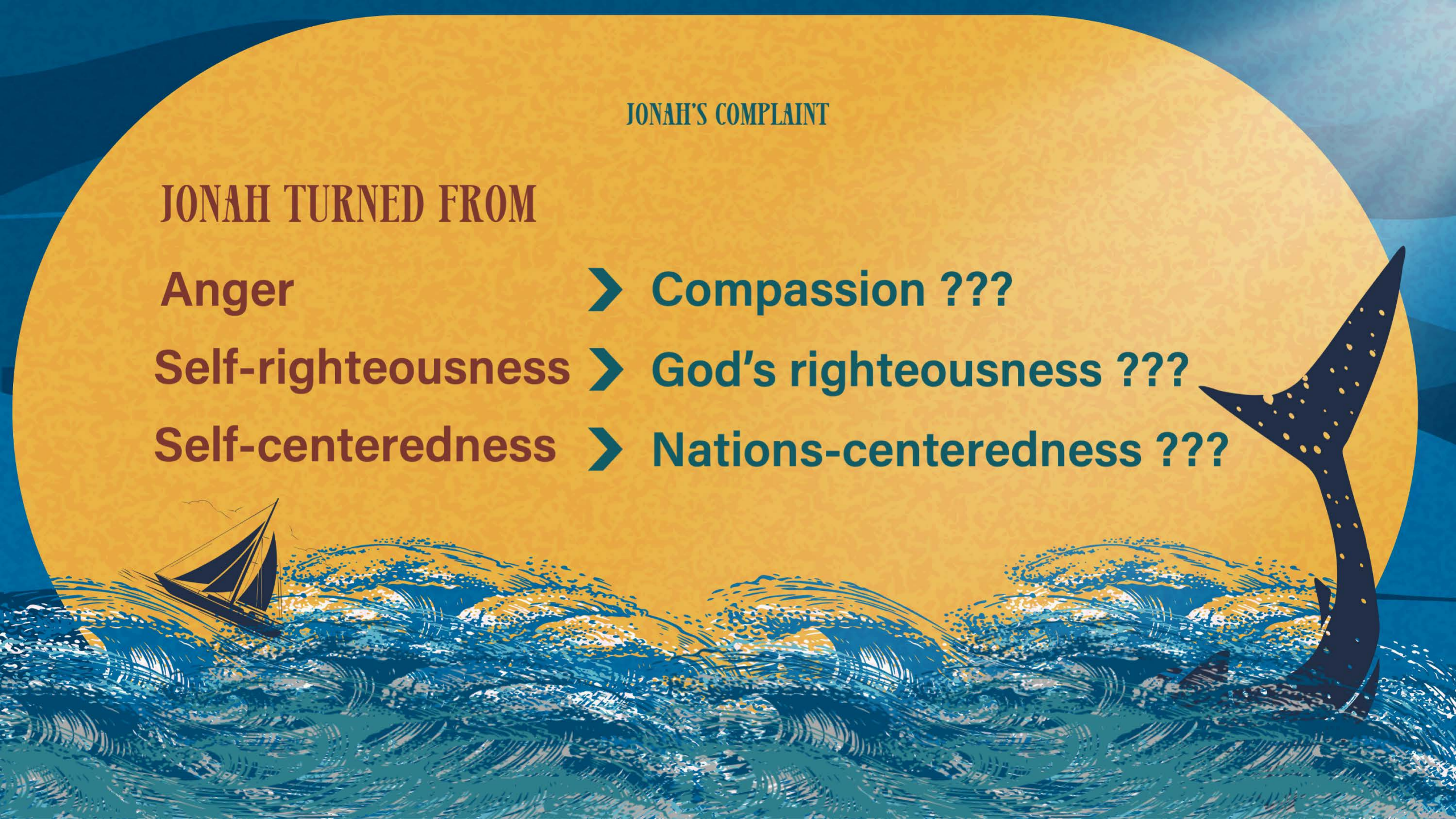
➤ **Compassion ???**

**Self-righteousness**

➤ **God's righteousness ???**

**Self-centeredness**

➤ **Nations-centeredness ???**





*God lovingly responds to and transforms  
those who cry out to Him!*

<b>Cry to God</b>	<b>God's Character</b>	<b>Transformation from</b>	<b>Transformation to</b>
<b>Sailors' cry</b>	<b>Sovereign</b>	<b>Worshipping other gods</b>	<b>Revering Yahweh</b>
<b>Jonah's cry</b>	<b>Patient</b>	<b>Disobedient Lost Distress</b>	<b>Hopeful Thankful Purposeful</b>
<b>Nineveh's cry</b>	<b>Forgiving</b>	<b>Wicked Evil</b>	<b>Repentance</b>
<b>Jonah's complaint</b>	<b>Compassionate</b>	<b>Angry Self-righteous Self-centered</b>	<b>???</b>



*A prophet greater than Jonah*

**MATTHEW 12:39-41**

