

A photograph of a person's hand raised in prayer, set against a dark background with a bright, glowing light source. The hand is silhouetted against the light, which creates a starburst effect. The overall mood is spiritual and uplifting.

*Loving Church,*

**BUILDING LIVES**

# THE CHURCH



## *Ekklesia*

- An assembly of citizens
- Comprises of people who have been called out by God

A large crowd of people is shown from behind, their silhouettes dark against a bright, hazy background. Many have their hands raised in the air, some with fingers spread, suggesting a moment of worship or praise. The scene is lit with dramatic stage lighting, with beams of light cutting through the air. In the background, a large screen displays text, including "THE NAME W", "ING UP THE EARTH AND", "JESUS YOU'RE THE NAME WE'R", and "GLORY SHAKING UP THE EAR".

The church is a people  
called out by God and  
joined together by the  
Holy Spirit to become  
a community



**The church is God's  
biblical community!**

**We belong to this  
community!**

*Loving Church,*

**BUILDING LIVES**

**Part One**

**WE BELONG**





GOD **GIVES** US A

*common identity*

Ephesians 2:19-22





# OUR IDENTITY

- Citizens with God's people
- Members of His household
- Joined together as a holy temple



Our identity is found in  
the community we belong to





GOD **PLACES** US IN THIS  
*community* TOGETHER

1 Corinthians 12:12-14, 24-27

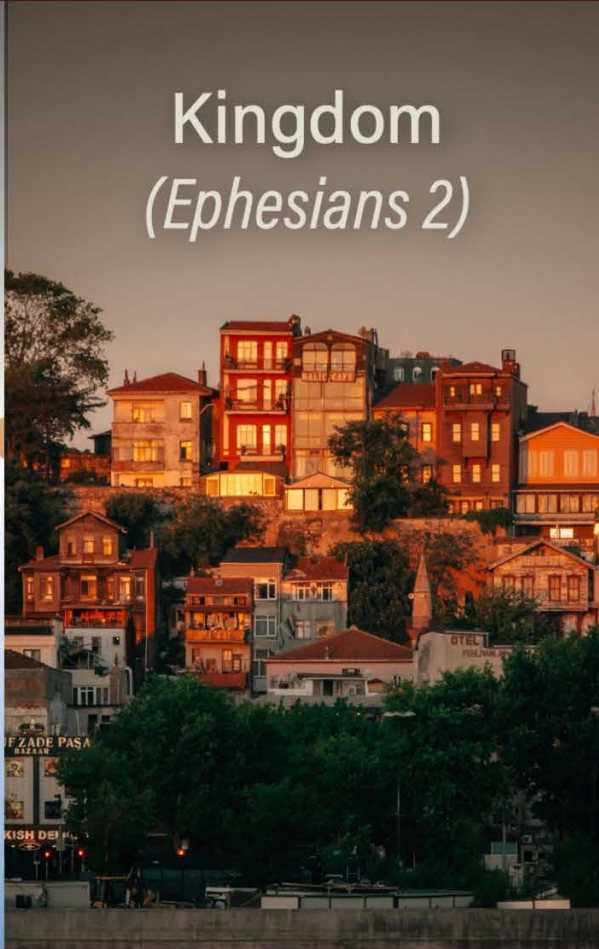


# CHURCH - OUR COMMUNITY

One body  
*(1 Corinthians 12)*



Kingdom  
*(Ephesians 2)*



Family/Household  
*(Ephesians 2)*



Holy Temple  
*(Ephesians 2)*



# PICTURE OF COMMUNITY - THE EARLY CHURCH

Acts 2:42-47



# PICTURE OF COMMUNITY - THE EARLY CHURCH

- Togetherness
- Belonging
- Participation
- Vulnerability
- Generosity
- Acceptance
- Grace



# PICTURE OF COMMUNITY - THE EARLY CHURCH

This biblical  
community is  
God-focused!



Commentary

# Commentary: Loneliness is an overlooked public health challenge in ageing Singapore

Countries like Singapore place an emphasis on self-reliance, making it difficult for individuals to acknowledge their loneliness and seek support, say researchers from Centre for Ageing Research & Education, Duke-NUS Medical School.



Source:  
[channelnewsasia.com](http://channelnewsasia.com)

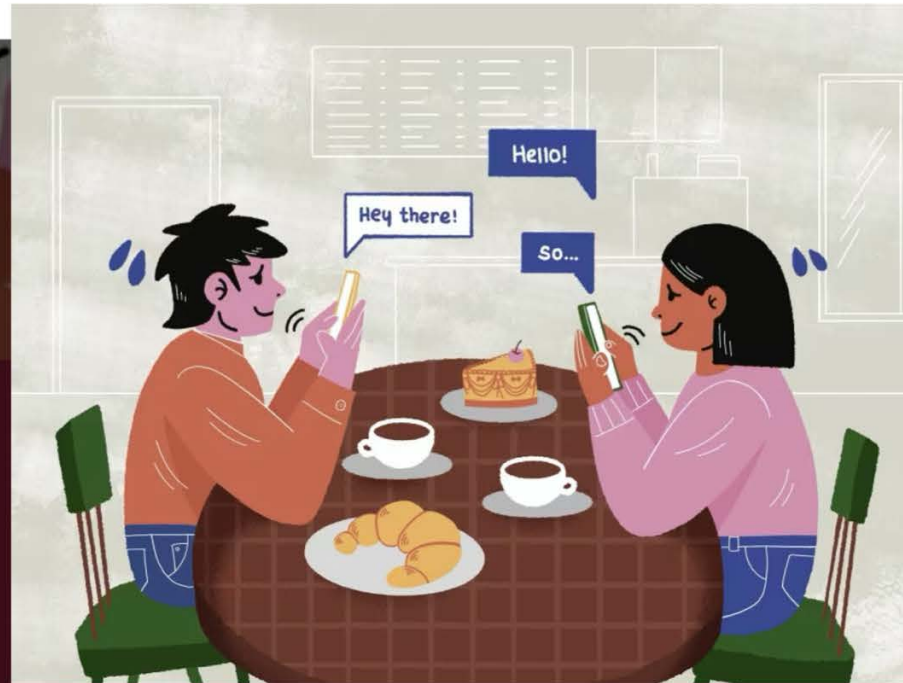
# Youths in Singapore more likely to report higher levels of social isolation and loneliness: IPS poll



Source:  
[todayonline.com](https://www.todayonline.com)

Hello!

**Amid concerns of loneliness and isolation, youths say they are trying to overcome fears of 'complex' in-person interactions**



Source:  
[todayonline.com](http://todayonline.com)



A photograph showing a group of people holding hands in a circle, symbolizing community and togetherness. The image is overlaid with a dark red background and a white text box. The text reads: "We live in togetherness in this community we belong to".

**We live in togetherness in  
this community we belong to**





GOD **DWELLS** IN THIS

*community*

1 Peter 2:4-5

1 Corinthians 3:16-17





God dwells in the community  
we belong to, where we will  
reflect His likeness and glory

# We Belong

to God  
that is why  
**we love God  
passionately**  
and worship Him  
together as  
one community

together  
that is why  
**we love church  
zealously**  
by loving  
one another

together  
that is why  
**we love souls  
relentlessly**  
by inviting people  
into this community



As a  
*Community*

We **encounter God**  
together

We **experience life**  
together

We **impact our world**  
together