

A photograph of a person's hand raised in a church setting. The hand is silhouetted against a dark background with a bright light source creating a lens flare effect. The text "Loving Church," is written in a red, cursive font across the image.


*Loving Church,*

**BUILDING LIVES**

# THE CHURCH



- *Ekklesia* – called out ones
- *Qahal* – assembly (OT)



The Church is not an organization but rather a people called out by God and brought together by the Holy Spirit



*Loving Church,*

**BUILDING LIVES**

**Part One**

**WE BELONG**





GOD **GIVES** US A

*common identity*

Ephesians 2:19-22







# OUR IDENTITY

- **Citizens** with God's people
- **Members** of His household
- **Joined** together as a holy temple

A close-up photograph of a field of bright yellow marigold flowers. The flowers are in various stages of bloom, with some in sharp focus and others blurred in the background. The overall tone is warm and vibrant. The text is overlaid on the image in white, with some words in a cursive font.

Our identity is found  
in the community  
we belong to!

We belong to *God*

We belong to *one another*





GOD **PLACES** US IN THIS  
*community* TOGETHER

1 Corinthians 12:12-14, 24-27



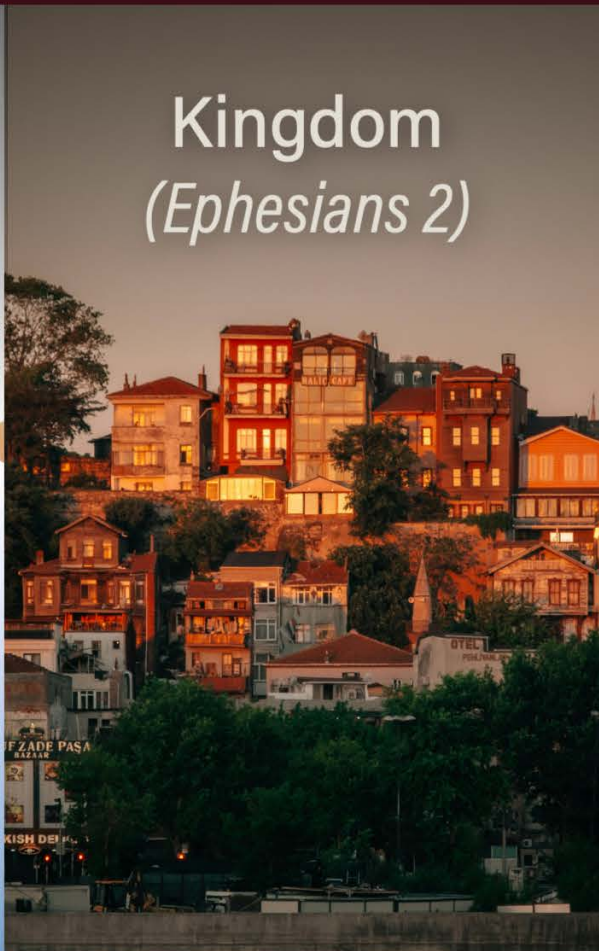


# CHURCH - OUR COMMUNITY

One body  
*(1 Corinthians 12)*



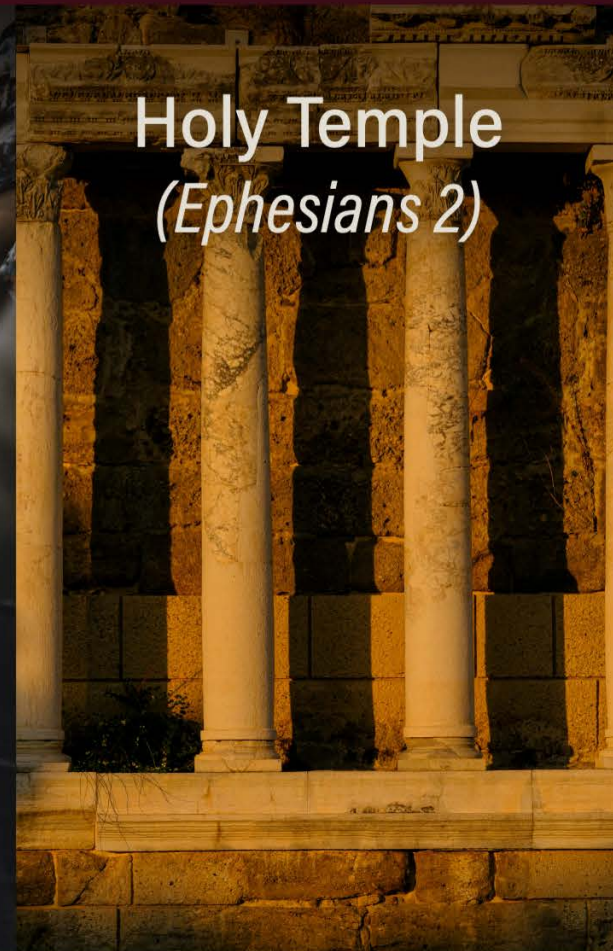
Kingdom  
*(Ephesians 2)*



Family/Household  
*(Ephesians 2)*



Holy Temple  
*(Ephesians 2)*



A photograph showing a group of people's hands clasped together in a circle, symbolizing unity and community. The image is overlaid with a dark red background and a white text box. The text reads: 

**We belong to  
this community!**



# PICTURE OF COMMUNITY - THE EARLY CHURCH

Acts 2:42-47



# PICTURE OF COMMUNITY - THE EARLY CHURCH

- Togetherness
- Belonging
- Participation
- Vulnerability
- Generosity
- Acceptance
- Grace





# PICTURE OF COMMUNITY - THE EARLY CHURCH

This biblical  
community is  
God-focused!



Commentary

# Commentary: Loneliness is an overlooked public health challenge in ageing Singapore

Countries like Singapore place an emphasis on self-reliance, making it difficult for individuals to acknowledge their loneliness and seek support, say researchers from Centre for Ageing Research & Education, Duke-NUS Medical School.



Source:  
[channelnewsasia.com](http://channelnewsasia.com)



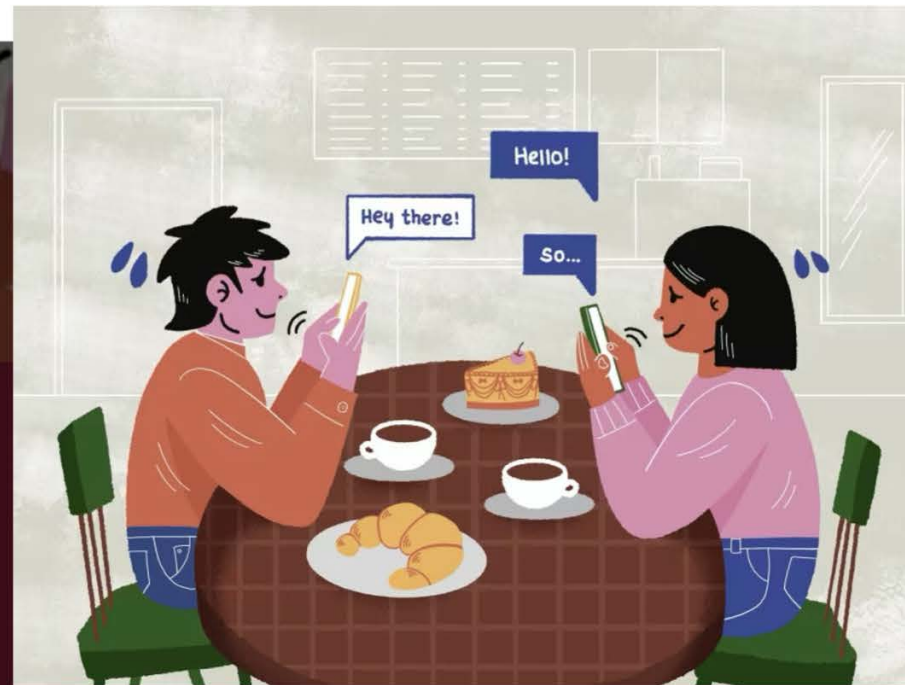
# Youths in Singapore more likely to report higher levels of social isolation and loneliness: IPS poll



Source:  
[todayonline.com](https://www.todayonline.com)

Hello!

**Amid concerns of loneliness and isolation, youths say they are trying to overcome fears of 'complex' in-person interactions**



Source:  
[todayonline.com](http://todayonline.com)









GOD **DWELLS** IN THIS

*community*

Ephesians 2:21-22






## 1 Corinthians 3:16-17 (NIV)

Don't you know that you yourselves are God's temple and that God's Spirit dwells in your midst? If anyone destroys God's temple, God will destroy that person; for God's temple is sacred, and you together are that temple.





We who are joined together  
in one family as the church  
is a **HOLY DWELLING PLACE**  
for God's presence



We love God passionately,  
love church zealously,  
and love souls relentlessly.

We will encounter God,  
experience life,  
and impact our world.

