

You Have

A Choice!







LISTEN

James 1:19

**We show love when we
listen actively with interest and empathy
instead of indifference and apathy**





OBEDY

Ephesians 6:1-3
Colossians 3:22

**We show love when we choose
to obey and submit and
not disobey with dissent**





VALUE

Philippians 2:3-4

**We show love when
we choose to value others and
not disregard them**

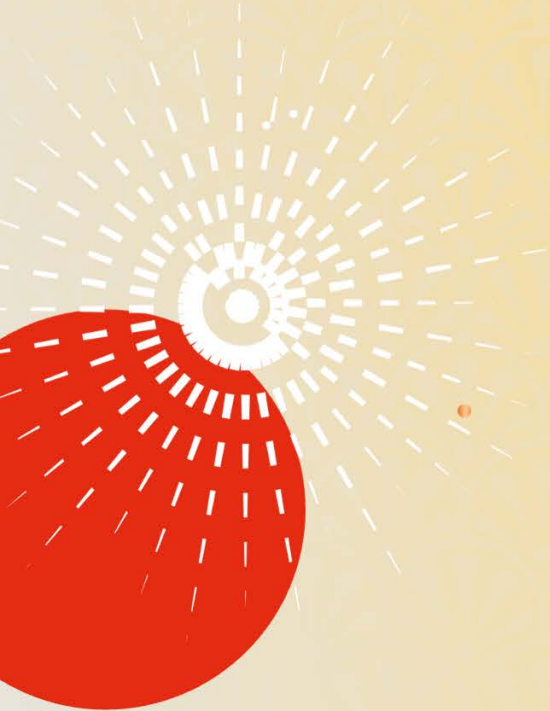




ENCOURAGE

1 Thessalonians 5:11
Ephesians 4:29

**We show love when we choose to
encourage others by building them up and
not breaking them down**



L - Listen with interest and empathy

O - Obey our elders and superiors

V - Value others above ourselves

E - Encourage people by building them up

The background features a repeating pattern of stylized fan or shell motifs in a light orange color against a darker orange background. There are two circular decorative elements: a solid dark red circle in the bottom-left corner with a white sunburst pattern radiating from its top edge, and a dark brown circle in the top-right corner with a white floral pattern.

We bring life when we choose to
love with God's love

1 John 4:19